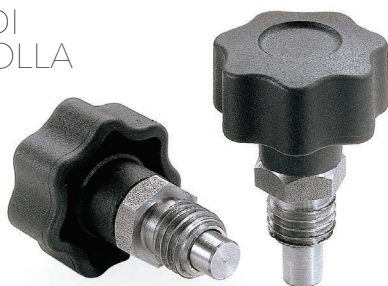


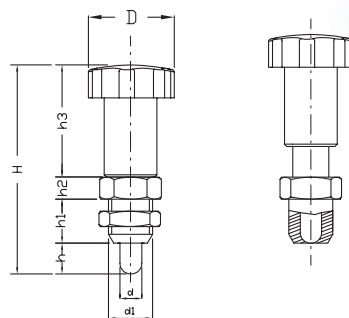
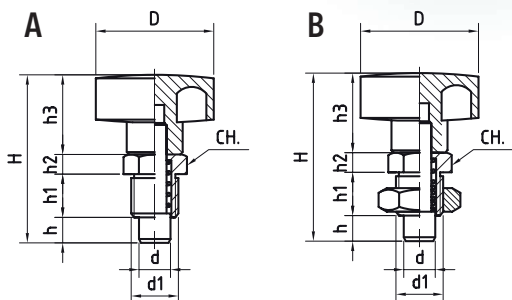
# PISTONCINO DI ARRESTO A MOLLA

## SPRING LOCKING STUD



# PISTONCINO DI ARRESTO A MOLLA CON FERMO

## SPRING LOCKING BOLT WITH REST POSITION



Pistoncino d'arresto con fermo posizione retratta

Spring locking bolt with rest position retracted plunger

- » **Tecnopolimero** rinforzato con fibra di vetro, colore standard nero, resistente a solventi, oli e grassi.
- » **Dado** in acciaio carbonitrurato zincato.
- » **Puntale** in acciaio carbonitrurato zincato.
- » **Controdado** in acciaio zincato UNI 5589 (versione B).
- » Technopolymer, fiberglass-reinforced, black colour, solvents-oils greaseproof.
- » Nut : carbonitrided, zinc plated steel.
- » Point: carbonitreded zinc plated steel.
- » Lock nut: zinc plated steel, UNI 5589 (version B).

- » **Tecnopolimero** rinforzato con fibra di vetro, colore standard nero, resistente a solventi, oli e grassi.
- » **Dado** in acciaio carbonitrurato zincato.
- » **Puntale** in acciaio carbonitrurato zincato.
- » **Molla** inox AISI 302
- » **Controdado** in acciaio zincato UNI 5589 (versione B).
- » Technopolymer, fiberglass-reinforced, black colour, solvents-oils greaseproof.
- » Nut : carbonitrided, zinc plated steel.
- » Point: carbonitreded zinc plated steel.
- » Stainless steel spring AISI 302
- » Lock nut: zinc plated steel, UNI 5589 (version B).

Cod. Code	d	H	d1	D	h	h1	h2	h3	CH.	Gr.
-----------	---	---	----	---	---	----	----	----	-----	-----

### VERSIONE A - VERSION A

12980450	5	32	M10x1	20	5	11	5	11	14	14
12980000	6	33	M12x1,5	20	6	11	5	11	14	16
12980050	7	34	M12	20	7	11	5	11	14	16
12980100	8	33	M12x1,5	20	6	11	5	11	14	23
12980150	6	44	M12x1,5	30	6	11	5	22	14	23
12980200	7	45	M12	30	7	11	5	22	14	23
12980250	8	45	M12x1,5	30	7	11	5	22	14	25
12980260	8	45	M12	30	7	11	5	22	14	25
12980300	6	49	M16x1,5	30	7	11	9	22	19	25
12980350	7	49	M16x1,5	30	7	11	9	22	19	25
12980400	8	49	M16x1,5	30	7	11	9	22	19	25

### VERSIONE B: Controdado in acciaio zincato UNI 5589

### VERSION B: Lock nut: zinc plated steel, UNI 5589

12990450	5	32	M10x1	20	5	11	5	11	14	20
12990000	6	33	M12x1,5	20	6	11	5	11	14	28
12990050	7	34	M12	20	7	11	5	11	14	28
12990100	8	33	M12x1,5	20	6	11	5	11	14	35
12990150	6	44	M12x1,5	30	6	11	5	22	14	35
12990200	7	45	M12	30	7	11	5	22	14	35
12990250	8	45	M12x1,5	30	7	11	5	22	14	35
12990260	8	45	M12	30	7	11	5	22	14	35
12990300	6	49	M16x1,5	30	7	11	9	22	19	37
12990350	7	49	M16x1,5	30	7	11	9	22	19	37
12990400	8	49	M16x1,5	30	7	11	9	22	19	37

Cod. Code	D	d	H	d1	h	h1	h2	h3	CH	Gr.
-----------	---	---	---	----	---	----	----	----	----	-----

### VERSIONE A - VERSION A

12900000	20	5	45	M10x1	6	11	5	23	14	21
12900050	20	6	47	M10x1	7	11	6,5	23	14	21
12900100	20	6	47	M12x1,5	7	11	6,5	23	14	21
12900150	20	7	47	M12	7	11	6,5	23	14	21
12900200	20	8	47	M12x1,5	7	11	6,5	23	14	21
12900250	30	6	56	M12x1,5	8	11	7	30	14	34
12900300	30	7	56	M12	8	11	7	30	14	34
12900340	30	8	56	M12	8	11	7	30	14	34
12900350	30	8	56	M12x1,5	8	11	7	30	14	34
12900400	30	6	56	M16x1,5	8	11	7	30	19	48
12900450	30	7	56	M16x1,5	8	11	7	30	19	49
12900500	30	8	56	M16x1,5	8	11	7	30	19	50

### VERSIONE B: Controdado in acciaio zincato UNI 5589

### VERSION B: Lock nut: zinc plated steel, UNI 5589

12910000	20	5	45	M10x1	6	11	5	23	14	28
12910050	20	6	47	M10x1	7	11	6,5	23	14	28
12910100	20	6	47	M12x1,5	7	11	6,5	23	14	30
12910150	20	7	47	M12	7	11	6,5	23	14	30
12910200	20	8	47	M12x1,5	7	11	6,5	23	14	30
12910250	30	6	56	M12x1,5	8	11	7	30	14	43
12910300	30	7	56	M12	8	11	7	30	14	43
12910340	30	8	56	M12	8	11	7	30	14	43
12910350	30	8	56	M12x1,5	8	11	7	30	14	43
12910400	30	6	56	M16x1,5	8	11	7	30	19	66
12910450	30	7	56	M16x1,5	8	11	7	30	19	67
12910500	30	8	56	M16x1,5	8	11	7	30	19	68