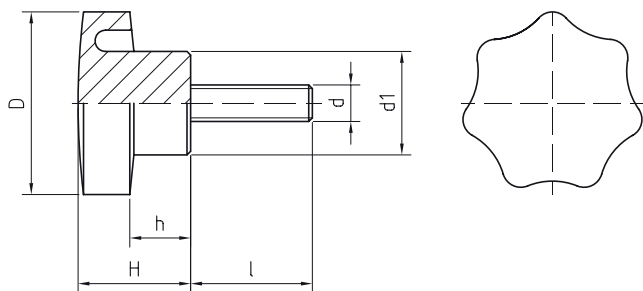


VOLANTINO 7 PUNTE LEGGERO CON PERNO FERRO

LIGHTWEIGHT STAR KNOB, 7 POINTS WITH THREADED STEEL STUD

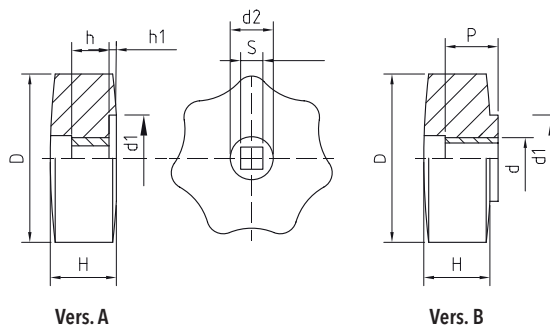
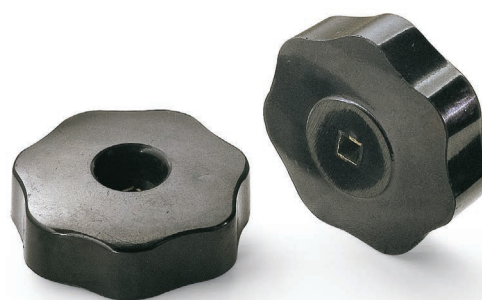


- » **Duroplasto** di colore nero, resistente a solventi, oli, grassi ed altri agenti chimici.
- » **Perno** in AVP filettato con estremità terminale smussata.
- » Phenoplast, black colour, solvents-oil-greases and other chemical agents-proof.
- » Zinc-plated steel stud, threaded, chamfered end.

Cod. Code	D	d	d1	H	h	l	Gr.
05250250	30	06MA	17	23	10	12	13
05250300	30	06MA	17	23	10	15	15
05250350	30	06MA	17	23	10	20	18
05250450	30	06MA	17	23	10	30	18
05250500	30	06MA	17	23	10	40	20
05250550	30	06MA	17	23	10	50	22
05250650	30	08MA	17	23	10	20	20
05250700	30	08MA	17	23	10	30	23
05250750	30	08MA	17	23	10	40	26
05250800	30	08MA	17	23	10	50	29
05250850	40	06MA	21	27	11	20	30
05250900	40	06MA	21	27	11	30	32
05250950	40	06MA	21	27	11	40	34
05251000	40	06MA	21	27	11	50	36
05251050	40	08MA	21	27	11	15	33
05251100	40	08MA	21	27	11	20	34
05251200	40	08MA	21	27	11	30	38
05251250	40	08MA	21	27	11	40	41
05251300	40	08MA	21	27	11	50	45
05251400	40	10MA	21	27	11	20	42
05251450	40	10MA	21	27	11	30	48
05251500	40	10MA	21	27	11	40	52
05251550	40	10MA	21	27	11	50	57

VOLANTINO 7 PUNTE RIBASSATO

STAR KNOB, 7 POINTS, LOWERED



- » **Duroplasto** di colore nero, resistente a solventi, oli, grassi ed altri agenti chimici.
- » a_ con foro passante quadro.
- » b_ Boccola in ottone con foro passante filettato.
- » Phenoplast, black colour, solvents-oils-greases and other chemical agents-proof.
- » a_square thru hole.
- » b_Brass insert, threaded thru-hole.

Cod. Code	D	d1	d2	H	h1	S	h	d	P	Gr.
VERSIONE A										
05500050	40	21	15	14	3	6x6	9			30
05500100	40	21	15	14	3	7x7	9			30
05500200	50	25	16	13	3	6x6	9			55
05500250	50	25	16	13	3	7x7	9			55
05500350	60	28	16	21	4	6x6	9			88
05500400	60	28	16	21	4	7x7	9			88
05500450	60	28	16	21	4	8x8	9			88
05500550	70	30	18	24	4	7x7	9			125
5500600	70	30	18	24	4	8x8	9			125
VERSIONE B										
05510250	40	21	15	17				M8	15	30
05510300	40	21	15	17				M10	15	30
05510400	50	25	16	25				M10	20	55
05510600	60	28	16	23				M12	20	88
05510800	70	30	18	26				M14	20	125