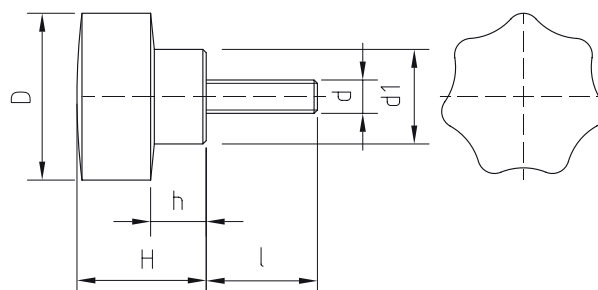
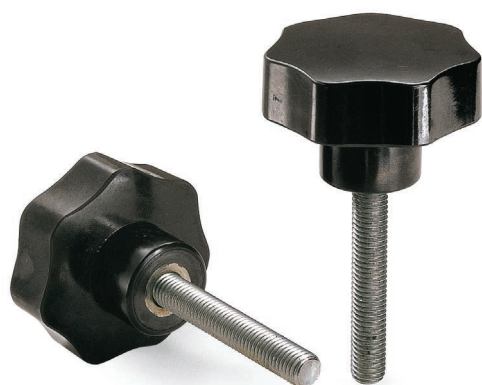


# VOLANTINO 7 PUNTE CON PERNO ACCIAIO INOX

STAR KNOB, 7 POINTS WITH STAINLESS  
STEEL STUD



- » **Duroplasto** di colore nero, resistente a solventi, oli, grassi ed altri agenti chimici.
- » **Perno** in acciaio inox filettato con estremità terminale piana.

- » Phenoplast, black colour, solvents-oils-greases and other chemical agents-proof.
- » Stainless steel stud, threaded, flat end.

Cod. Code	D	d	l	H	h	d1	Gr.
05060050	30	M04	30	23	10	17	18
05060075	30	M04	50	23	10	17	19
05060150	30	M05	20	23	10	17	18
05060200	30	M05	30	23	10	17	18
05060225	30	M05	50	23	10	17	19
05060300	30	M06	15	23	10	17	20
05060350	30	M06	20	23	10	17	22
05060450	30	M06	30	23	10	17	23
05060500	30	M06	40	23	10	17	26
05060550	30	M06	50	23	10	17	27
05060650	30	M08	20	23	10	17	25
05060700	30	M08	30	23	10	17	29
05060750	30	M08	40	23	10	17	31
05060800	30	M08	50	23	10	17	33
05060900	40	M06	30	26	11	21	35
05060950	40	M06	40	26	11	21	40
05061000	40	M06	50	26	11	21	44
05061100	40	M08	20	26	11	21	40
05061200	40	M08	30	26	11	21	45
05061250	40	M08	40	26	11	21	47
05061300	40	M08	50	26	11	21	55
05061450	40	M10	30	26	11	21	55
05061500	40	M10	40	26	11	21	60
05061550	40	M10	50	26	11	21	65

Cod. Code	D	d	l	H	h	d1	Gr.
05061750	50	M08	30	32	15	25	74
05061800	50	M08	40	32	15	25	75
05061850	50	M08	50	32	15	25	80
05062000	50	M10	30	32	15	25	80
05062050	50	M10	40	32	15	25	86
05062100	50	M10	50	32	15	25	90
05062250	50	M12	30	32	15	25	99
05062300	50	M12	40	32	15	25	101
05062350	50	M12	50	32	15	25	104
05062650	60	M10	30	34	16	28	104
05062700	60	M10	40	34	16	28	106
05062750	60	M10	50	34	16	28	117
05062800	60	M12	30	34	16	28	132
05062850	60	M12	40	34	16	28	136
05062900	60	M12	50	34	16	28	140
05063150	70	M12	30	42	18	30	172
05063250	70	M12	50	42	18	30	180