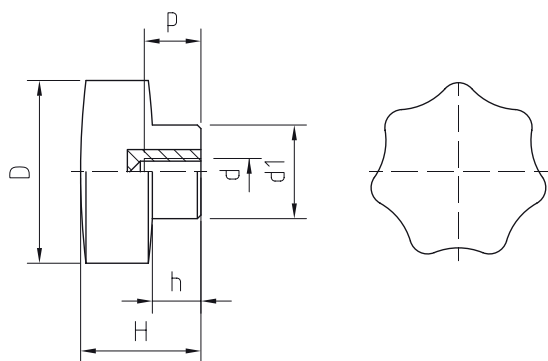
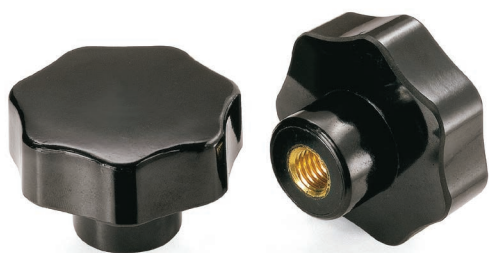


VOLANTINO 7 PUNTE CON BOCCOLA OTTONE FILETTATA

STAR KNOB, 7 POINTS WITH THREADED BRASS INSERT



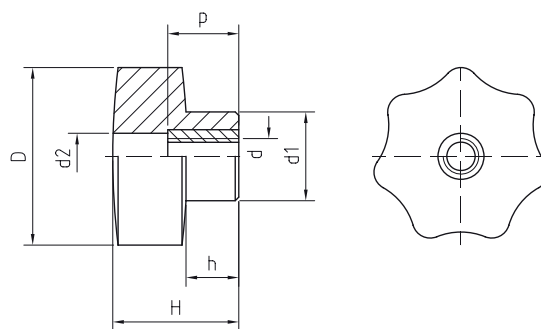
- » **Duroplasto** di colore nero, resistente a solventi, oli, grassi ed altri agenti chimici.
- » **Boccola** in ottone con foro cieco filettato.
- » Corrispondenza UNI 6960-71 tipo A.

- » Phenoplast, black colour, solvents-oils-greases and other chemical agents-proof.
- » Brass insert, threaded blind hole.
- » To UNI 6960-71 type A.

Cod. Code	D	d	d1	H	h	P	Gr.
05000000	30	04MA	17	23	10	8	15
05000050	30	05MA	17	23	10	10	15
05000100	30	06MA	17	23	10	12	16
05000150	30	08MA	17	23	10	16	17
05000250	40	06MA	21	27	11	12	30
05000300	40	08MA	21	27	11	16	33
05000350	40	10MA	21	27	11	16	33
05000450	50	08MA	25	35	15	16	59
05000500	50	10MA	25	35	15	22	67
05000550	50	12MA	25	35	15	22	68
05000600	60	08MA	28	39	18	16	85
05000650	60	10MA	28	39	18	22	88
05000700	60	12MA	28	39	18	22	93
05000750	60	14MA	28	39	18	22	98
05000800	70	10MA	30	42	18	22	121
05000850	70	12MA	30	42	18	22	127
05000900	70	14MA	30	42	18	22	133
05000950	70	16MA	30	42	18	22	138
05001050	80	12MA	32	53	28	22	186
05001100	80	14MA	32	53	28	22	186
05001150	80	16MA	32	53	28	22	187

VOLANTINO 7 PUNTE CON BOCCOLA OTTONE FILETTATA PASSANTE

STAR KNOB, 7 POINTS WITH THREADED BRASS THRU-INSERT



- » **Duroplasto** di colore nero, resistente a solventi, oli, grassi ed altri agenti chimici.
- » **Boccola** in ottone con foro passante filettato.
- » Corrispondenza UNI 6960-71 tipo B.

- » Phenoplast, black colour, solvents-oils-greases and other chemical agents proof.
- » Brass insert, threaded thru-hole.
- » To UNI 6960-71 type B.

Cod. Code	D	d	d1	d2	H	h	P	Gr.
05010000	30	04MA	17	10	23	10	15	13
05010050	30	05MA	17	10	23	10	15	14
05010100	30	06MA	17	10	23	10	15	15
05010150	30	08MA	17	10	23	10	15	16
05010250	40	06MA	21	10,5	27	11	20	35
05010300	40	08MA	21	10,5	27	11	20	31
05010350	40	10MA	21	10,5	27	11	20	32
05010450	50	08MA	25	12,5	35	15	20	57
05010500	50	10MA	25	12,5	35	15	20	58
05010550	50	12MA	25	12,5	35	15	20	61
05010600	60	08MA	28	14	39	18	20	73
05010650	60	10MA	28	14	39	18	20	82
05010700	60	12MA	28	14	39	18	20	85
05010800	70	10MA	30	19	42	18	26	113
05010850	70	12MA	30	19	42	18	26	116
05010900	70	14MA	30	19	42	18	26	121
05010950	70	16MA	30	19	42	18	26	115
05011050	80	12MA	32	17	53	28	26	170
05011150	80	16MA	32	17	53	28	26	167