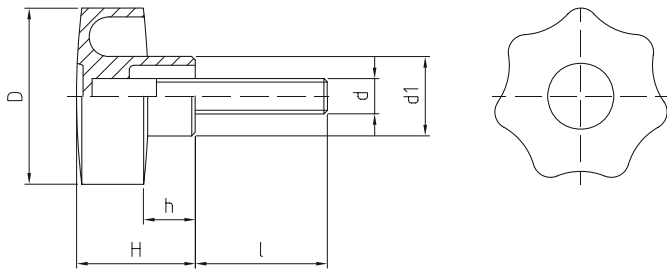
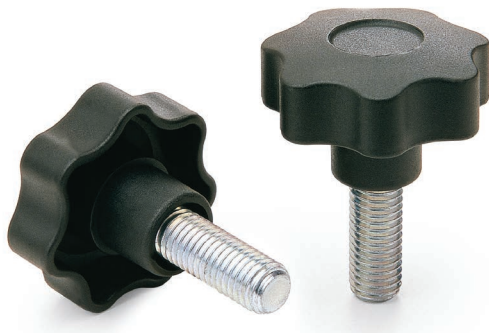


VOLANTINO 7 PUNTE NYLON CON PERNO

STAR KNOB, 7 POINTS WITH
THREADED STEEL STUD



- » **Tecnopolimero** rinforzato con fibra di vetro, colore standard nero, resistente a solventi, oli e grassi.
- » **Perno** in acciaio zincato filettato ± 1 mm.
- » Versioni speciali (con inserto in OTTONE e INOX) e altri colori a richiesta (vedi pag. 5).
- » Technopolymer, fiberglass-reinforced, black colour, solvents-oils-greaseproof.
- » Zinc-plated steel stud ± 1 mm.
- » Special items (BRASS and STAINLESS STEEL insert) and colours on request (see page 5).

Cod. Code	D	d	l	H	h	d1	Gr.
12023100	20	M04	10	11	5	12	4
12023125	20	M04	20	11	5	12	6
12023150	20	M04	30	11	5	12	6
12023175	20	M04	40	11	5	12	6
12023185	20	M04	50	11	5	12	7
12023200	20	M05	11	11	5	12	6
12023225	20	M05	20	11	5	12	6
12023250	20	M05	30	11	5	12	7
12023275	20	M05	40	11	5	12	9
12023285	20	M05	50	11	5	12	9
12023300	20	M06	10	11	5	12	7
12023315	20	M06	15	11	5	12	8
12023325	20	M06	20	11	5	12	9
12023350	20	M06	30	11	5	12	10
12023375	20	M06	40	11	5	12	12
12023385	20	M06	50	11	5	12	13
12020050	30	M04	30	22	9	14	15
12020085	30	M04	50	22	9	14	17
12020100	30	M05	10	22	9	14	13

Cod. Code	D	d	l	H	h	d1	Gr.
12020150	30	M05	20	22	9	14	14
12020200	30	M05	30	22	9	14	15
12020225	30	M05	40	22	9	14	16
12020235	30	M05	50	22	9	14	17
12020250	30	M06	10	22	9	14	14
12020300	30	M06	15	22	9	14	15
12020350	30	M06	20	22	9	14	14
12020450	30	M06	30	22	9	14	18
12020500	30	M06	40	22	9	14	19,5
12020550	30	M06	50	22	9	14	21
12020600	30	M08	15	22	9	14	21
12020650	30	M08	20	22	9	14	23
12020700	30	M08	30	22	9	14	25
12020750	30	M08	40	22	9	14	28
12020800	30	M08	50	22	9	14	30
12020850	40	M06	20	26	11	18	25
12020900	40	M06	30	26	11	18	24
12020950	40	M06	40	26	11	18	26
12021000	40	M06	50	26	11	18	28
12021050	40	M08	15	26	11	18	29
12021100	40	M08	20	26	11	18	31
12021200	40	M08	30	26	11	18	33
12021250	40	M08	40	26	11	18	37
12021300	40	M08	50	26	11	18	39
12021350	40	M08	60	26	11	18	43
12021400	40	M10	20	26	11	18	42
12021450	40	M10	30	26	11	18	47
12021500	40	M10	40	26	11	18	46
12021550	40	M10	50	26	11	18	50
12021600	50	M08	15	32	15	20	36
12021650	50	M08	20	32	15	20	40
12021750	50	M08	30	32	15	20	44
12021800	50	M08	40	32	15	20	44
12021850	50	M08	50	32	15	20	50
12021950	50	M10	20	32	15	20	51
12022000	50	M10	30	32	15	20	57
12022050	50	M10	40	32	15	20	62
12022100	50	M10	50	32	15	20	66
12022250	50	M12	30	32	15	20	75
12022300	50	M12	40	32	15	20	77
12022350	50	M12	50	32	15	20	84
12022400	60	M08	30	34	16	21	57
12022450	60	M08	40	34	16	21	60
12022500	60	M08	50	34	16	21	62
12022600	60	M10	20	34	16	21	62
12022650	60	M10	30	34	16	21	66
12022700	60	M10	40	34	16	21	70
12022750	60	M10	50	34	16	21	75
12022800	60	M12	30	34	16	21	91
12022850	60	M12	40	34	16	21	86
12022900	60	M12	50	34	16	21	94
12022985	60	M14	50	34	16	21	102