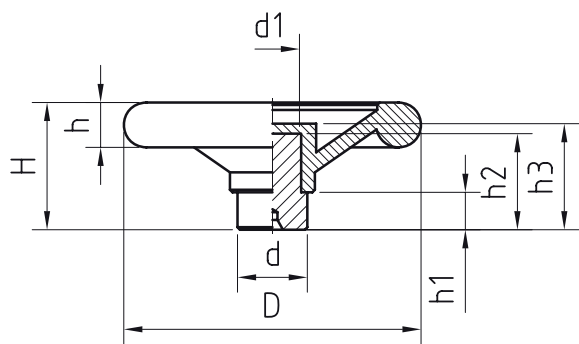


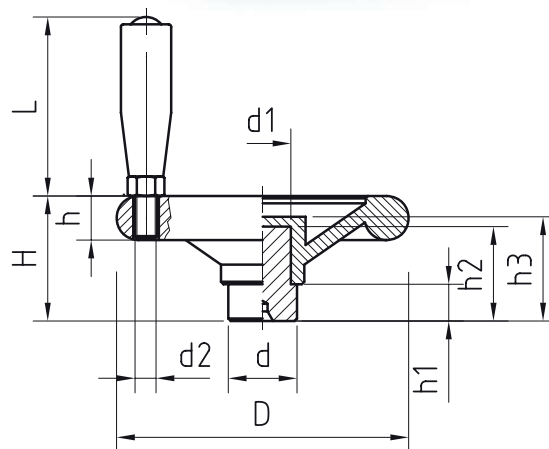
VOLANTINO PIENO  
E CON MOZZO AFFIORANTE  
HANDWHEEL, SOLID AND VISIBLE HUB



- » **Duroplasto** di colore nero, resistente a solventi, oli, grassi ed altri agenti chimici.
- » **Mozzo** in AVP zincato con pre-foro.
- » **Mozzo** in AVP zincato affiorante con pre-foro per esecuzione foro passante.
- » Versioni speciali a richiesta (vedi pag. 4).
- » Phenoplast, black colour, solvents-oils-greases and other chemical agents-proof.
- » Zinc-plated steel hub, with predrilled hole.
- » Zinc-plated steel visible hub, with preformed punching for thru-hole.
- » Special items on request (see page 4)

Cod. Code	D	d	d1	H	h	h1	h2	h3	Gr.
02000000	120	28	23	50	18	14	38	42	396
02000050	160	40	32	63	22	20	47	53	885
02000100	200	40	32	73	23	21	45	61	1109
02030000	120AFF.	28	23	50	18	14	38	42	420
02030050	160AFF.	40	32	63	22	20	47	53	927
02030100	200AFF.	40	32	73	23	21	47	61	1151

VOLANTINO PIENO CON MANIGLIA  
GIREVOLE E CON  
MOZZO AFFIORANTE  
HANDWHEEL, SOLID  
WITH REVOLVING  
HANDLE AND WITH  
VISIBLE HUB



- » **Duroplasto** di colore nero, resistente a solventi, oli, grassi ed altri agenti chimici.
- » **Mozzo** in AVP zincato con pre-foro.
- » **Mozzo** in AVP zincato affiorante con pre-foro per esecuzione foro passante.
- » **Maniglia** girevole (vedi pag. 52).
- » Versioni speciali a richiesta (vedi pag. 4).
- » Phenoplast, black colour, solvents-oils-greases and other chemical agents-proof.
- » Zinc-plated steel hub, with predrilled hole.
- » Zinc-plated steel visible hub, with preformed punching for thru-hole.
- » Revolving handle, with brass bushings (see page 52).
- » Special items on request (see page 4).

Cod. Code	D	d	d1	d2	H	h	h1	h2	h3	L	Gr.
02010000	120	28	23	8MA	50	18	14	38	42	70	411
02010050	160	40	32	10MA	63	22	20	45	53	85	856
02010100	200	40	32	10MA	73	23	21	45	61	85	1177
02040000	120 AFF.	28	23	8MA	50	18	14	38	42	70	423
02040050	160 AFF.	40	32	10MA	63	22	20	47	53	85	940
02040100	200 AFF.	40	32	10MA	73	23	21	47	61	85	1200